



E - M A I L S E R V E R

Installation Guide

Contents:

- ❖ Introduction
- ❖ How It Works?
- ❖ System Requirements
- ❖ Downloading
- ❖ Installation
- ❖ Setting up Web Server

Spearhead Infotech Systems Pvt. Ltd.

301, Thacker Tower, Sector 17

Plot No. 86, Sec 17.,Vashi, Navi Mumbai- 400705.

Tel- 91 22 27894387/5727 Telefax- 91 22 27894387

Email: sales@spearmail.co.in Website : www.spearmail.co.in

Introduction :

SpearMail is the simplest e-mail server to implement and manage as far as Small to Medium enterprises are concerned. It helps set up a comprehensive e-mail solution similar to that deployed at large corporate firms at a fraction of the price.

SpearMail is a Mail Server that allows Organisations to set up a messaging system in their Organisations. The messaging system will ensure that

- ✓ Every user has a separate and private e-mail address
- ✓ Users can send and receive e-mail right from their desktop, without dialling out each time
- ✓ Users can send mail within the Organisation as well as to the external world.

SpearMail also has a host of features, which enables Organisations to set up a powerful and cost effective mailing system in their organisations.

Note:

SpearMail is not an e-mail client. This means user cannot read and write mail-using SpearMail. Users need to use any standard e-mail client like Microsoft Outlook, Outlook Express, Netscape, Eudora to read and write mail.

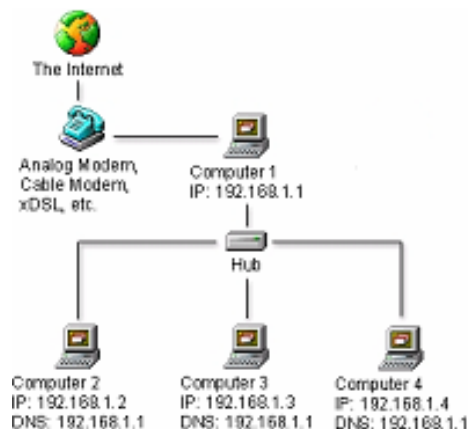
SpearMail is a post office for Internet mail clients. Mails sent by the users will be collected by SpearMail and sent out as and when it is scheduled to automatically dial out. SpearMail will also receive the mail addressed to your organisation, store in its database and pass it on to the clients as and when there is a request.

How it Works?

With only one computer, one Internet account and only one Internet connection any organization can expand the capabilities of their network into a full online presence. Any Internet connection can be used.

Workstations can run any Windows operating system that supports TCP/IP. SpearMail 6.0 can be installed on Windows 98SE/NT/2000/XP/2003.

NOTE: SpearMail 6.0 supports the amount of users licensed. If you have a 10 user license you will only be able to create 10 mailboxes.



System Requirements :

Operating System

- Windows® 98SE + MSIE 6 + PWS
- Windows NT® 4.0 SP5 + MSIE 6
- Windows® 2000 + MSIE 6 + IIS 5.0
- Windows® XP + MSIE 6 + IIS 5.1
- Windows® Server 2003 + MSIE 6 + IIS 6.0
- Windows® Vista + MSIE 7 + IIS 7.0

CPU

- Pentium III 500 Mhz and Above

Memory

- Windows 98SE and Windows ME – 256 MB of RAM
- Windows NT® 4.0 SP5 + MSIE 5 - 256 MB of RAM
- Windows 2000 and Windows XP - 256 MB of RAM
- Windows Server 2003 - 256 MB of RAM
- Windows Vista – 1 GB of RAM

Additional Notes and Requirements

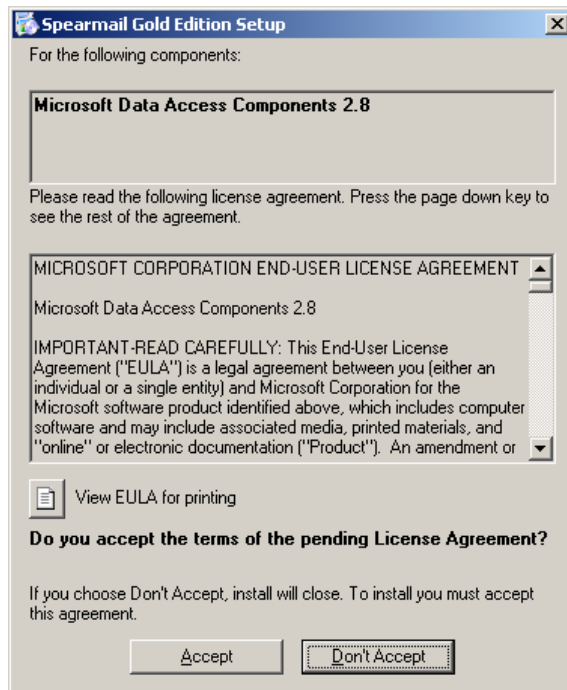
- You must have a properly operating TCP/IP network in order to use SpearMail 6.0.
- Microsoft Internet Explorer 6.0 or later is required to use all features.
- The Anti-virus Plug-in provides 1 year of anti-virus updates from the date of registration.
- Internet Connection - If SpearMail is used to send and receive Internet mail then you must have Internet Connectivity via Dial-up or Cable/DSL or Leased Line.

Downloading

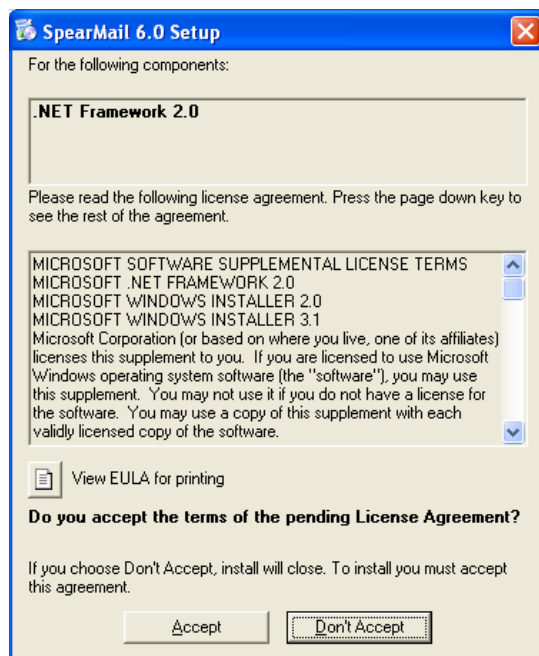
You can download SpearMail 6.0 from <http://www.spearmail.co.in/download> anytime. When downloading from this location you will always receive the most recent release of SpearMail Gold Edition 6.0

Installation

1. Place the SpearMail Installation CD-Rom into your CD-Rom Drive.
2. From Windows Explorer select the folder '**Setup**'
3. Double-click on the setup.exe file found in the '**Setup**' directory. This will then start the installation of SpearMail 6.0
4. First it will start installing first Component of the setup i.e. Microsoft Data Access Component 2.8, it will ask you "Accept" License Agreement, click on "Accept"

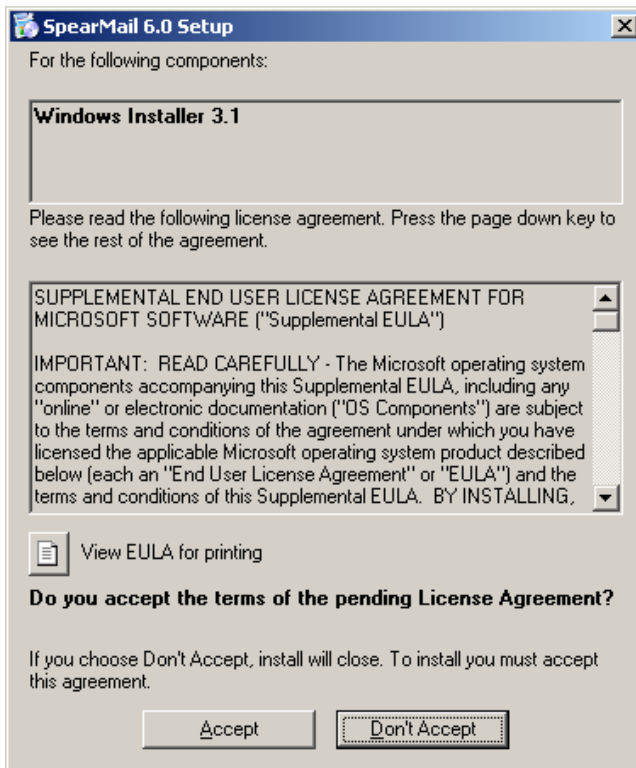


5. In next step it will ask to you "Accept" License Agreement, click on "Accept" for installing .NET Framework 2.0

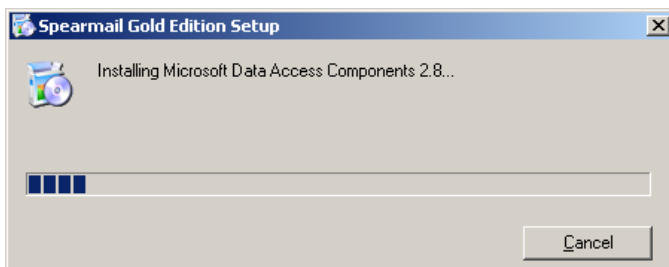


If you are not able to install .NET Framework 2.0 then stop all Antivirus Services as well as IIS and WWW service

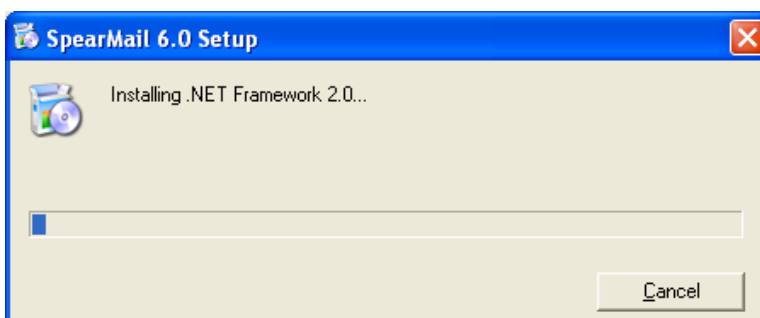
6. In next step it will ask to you "Accept" License Agreement, click on "Accept" for installing Windows Installer 3.1



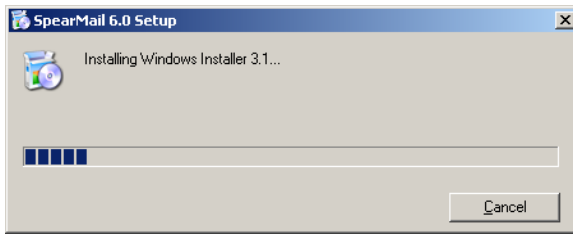
7. In next step it will start installing Microsoft Data Access Components 2.8



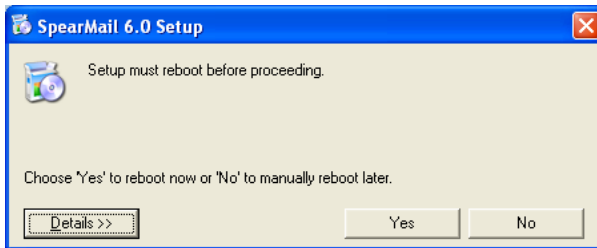
8. In next step it will start installing .NET Framework 2.0



9. In next step it will start installing Windows Installer 3.1



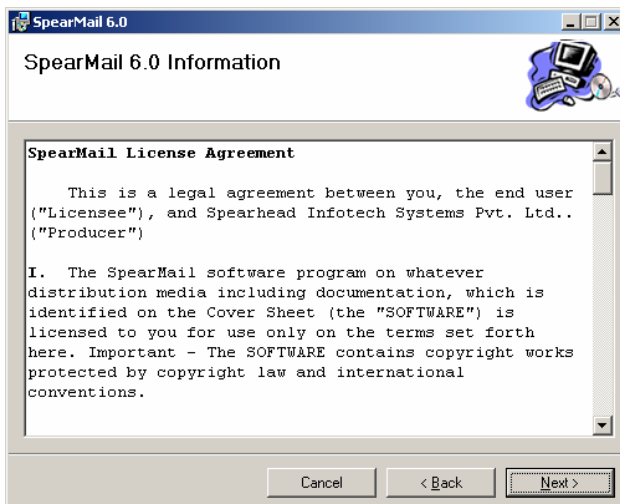
9. In next step it may ask you to reboot the system



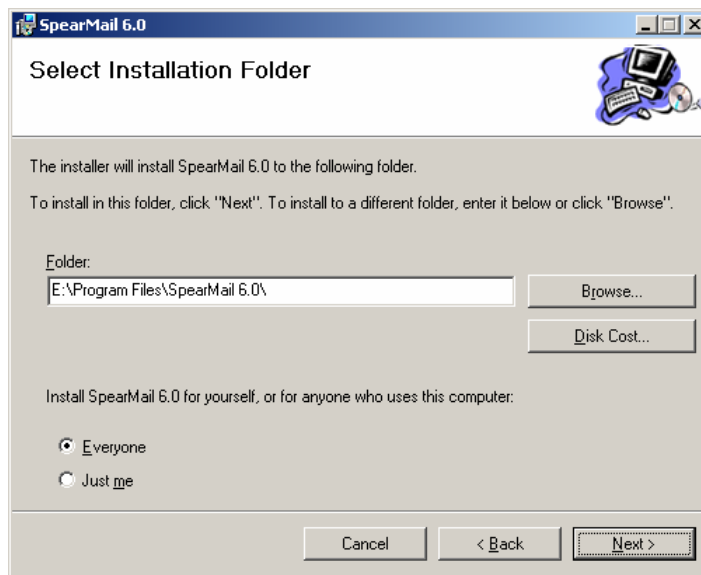
10. After rebooting System it will start installation of SpearMail 6.0



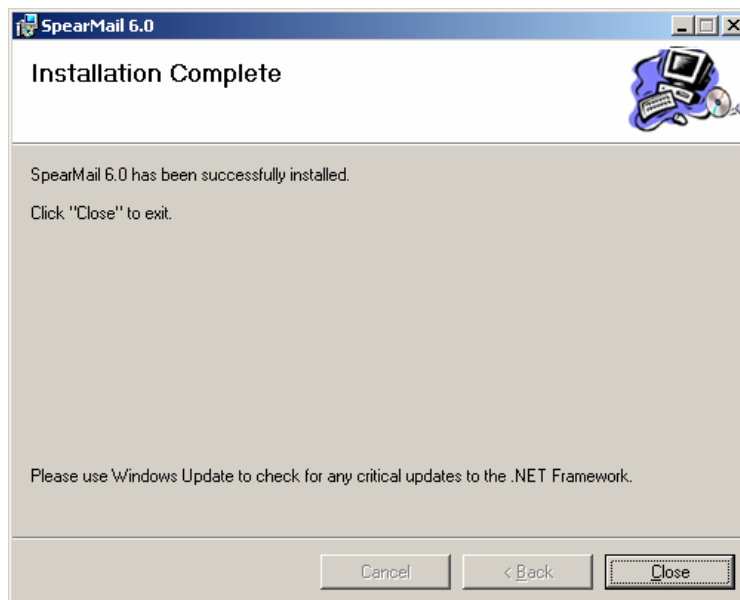
11. In next step it will ask you to ask License Agreement



12. In next screen it will ask you to select Destination Folder. By default it will be installed in c:\program files\SpearMail 6.0 directory. To install in another directory click on Browse and select the folder. Once you choose the folder click on Next



13. In next screen setup will give confirmation message that SpearMail 6.0 installation has been completed as shown in below screen.



17. Then after it will show confirmation message screen that SpearMail 6.0 has been successfully installed. Click on Finish.


Now you have successfully installed SpearMail 6.0

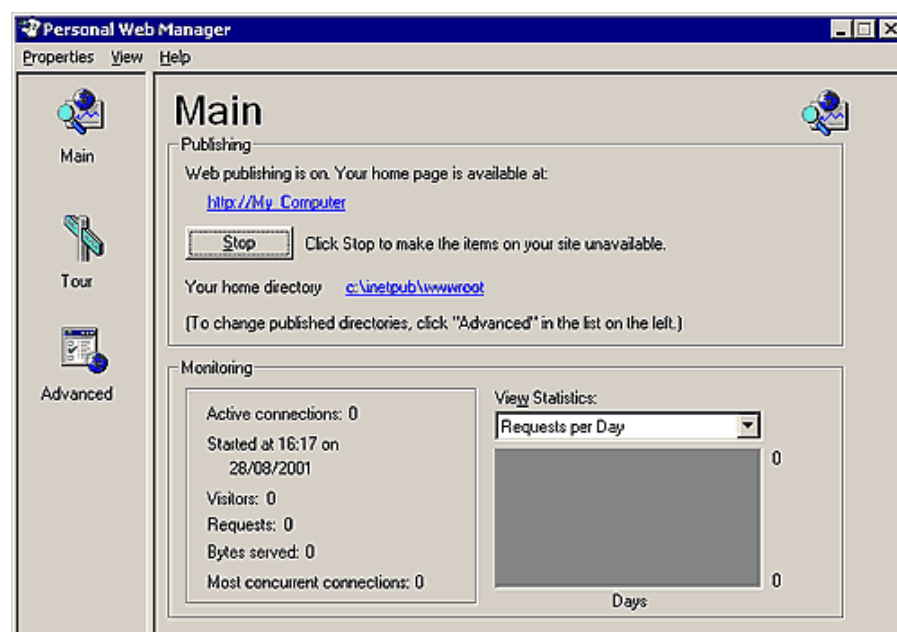
Setting Up Web Server:

Now you need to setup Web Server as per your operating system.

Installing Personal Web Server (PWS) on Windows 98

If you are running Windows 98 on your computer you can install Microsoft's Personal Web Server (PWS) for free from the SpearMail Installation CD and configure it to run on your system by following the instructions below: -

1. Place the SpearMail Installation CD-Rom into your CD-Rom Drive.
2. From Windows Explorer select the folder '*Win98-PWS*'
3. Double-click on the setup.exe file found in the '*Win98-PWS*' directory. This will then start the installation of Personal Web Server (PWS).
5. Choose the '*Minimum*' installation for PWS and leave it on all the default settings.
6. Once PWS is installed on your machine and you have rebooted as long as all has gone well you should see the icon, shown on the right, in the task bar at the bottom right hand corner of your desktop next to the clock. 
7. Double-click on this icon to open the 'Personal Web Manager' from which you can configure PWS.
8. Once the Personal Web Manager is open you will see the Main dialog box were it will show your home page and home directory default values. Where the home page is shown below as '*http://My_Computer*', will be '*http://*' followed by the name of your computer. Clicking on each of these values will open your home page in your default web browser or open the default home directory in Windows Explorer.



9. To view your home page in a web browser type '*http://My_Computer*' (substitute '*My_Computer*' for the name of your computer) into the address bar of your web browser. If you are not sure of the name of your computer then double-click on the '*Network*' icon in the '*Control Panel*', and click on the '*Network Identification*' tab. You can use IP Address also instead of Computer Name

10. Until you place your own web site in the default directory for the web servers home page you should now be looking at the documentation for PWS.

11. Now from CD copy Folder Named "SpearMail WebMail" to '*c:\inetpub\wwwroot*' directory. Now you have to change default home directory from '*c:\inetpub\wwwroot*' to '*c:\inetpub\wwwroot\SpearMail WebMail*'.

To change default directory click on Advanced -> Edit Properties -> Click on Browse and select path C:\inetpub\wwwroot\SpearMail WebMail and Click on OK.

12. Now you have to make sure that your default page should be login.asp. To make login.asp as default page click on Advanced, Make Sure that 'Enable Default Document' is check marked. In default Documents remove all the file names and enter login.aspx and close the menu

13. Now when you type '*http:// followed by your computer name*', into your web browser you should see Login Page of SpearMail WebMail.

Installing IIS on Windows XP Pro

If you are running Windows XP Professional on your computer you can install Microsoft's web server, Internet Information Server 5.1 (IIS) for free from the Windows XP Pro installation CD and configure it to run on your system by following the instructions below: -

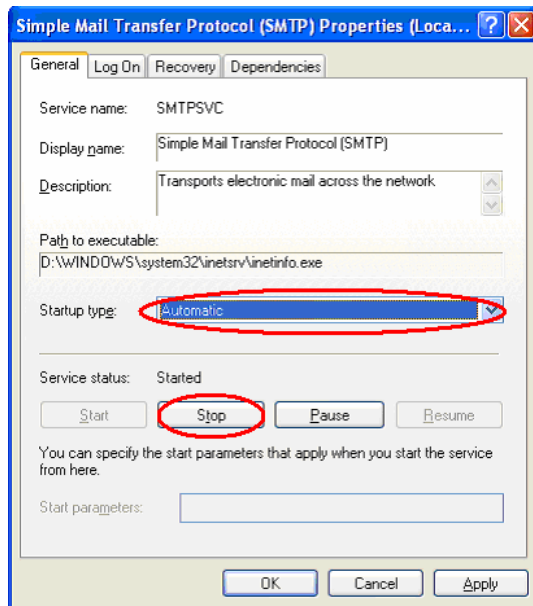
1. Place the Windows XP Professional CD-Rom into your CD-Rom Drive.
2. Open *'Add/Remove Windows Components'* found in *'Add/Remove Programs'* in the *'Control Panel'*.
3. Place a tick in the check box for *'Internet Information Services (IIS)'* leaving all the default installation settings intact.
4. Once IIS is installed on your machine you can view your home page in a web browser by typing *'http://localhost'* (you can substitute *'localhost'* for the name of your computer) into the address bar of your web browser. If you have not placed your web site into the default directory you should now be looking at the IIS documentation.
5. If you are not sure of the name of your computer right-click on the *'My Computer'* icon on your desktop, select *'Properties'* from the shortcut menu, and click on the *'Computer Name'* tab.
6. Your default web directory to place your web site in is *'C:\inetpub\wwwroot'*, but if you don't want to over write the IIS documentation found in this directory you can set up your own virtual directory through the *'Internet Information Services'* console.
7. The *'Internet Information Services'* console can be found in the *'Administration Tools'* in the *'Control Panel'* under *'Performance and Maintenance'*, if you do not have the control panel in Classic View.
8. Double-click on the *'Internet Information Services'* icon.



9. Once the *'Internet Information Services'* console is open you will see any IIS web services you have running on your machine including the SMTP server and FTP server, if you chose to install them with IIS.

10. Now you need to stop SMTP Service of Windows as SpearMail will be using the same port 25. To Stop SMTP services of Windows Go To Control Panel -> Administrative Tools-> Services, search for **"Simple Mail Transfer Protocol (SMTP)"** . Right click on Simple Mail Transfer Protocol (SMTP) go to properties click on Stop. Also change Startup Type from Automatic to Manual.

Pls. Look at the below screen for more reference



11. Now from CD copy Folder Named "SpearMail WebMail" to 'c:\inetpub\wwwroot' directory. Now you have to change default home directory from 'c:\inetpub\wwwroot' to 'c:\inetpub\wwwroot\SpearMail WebMail'. To change default directory Go to Control Panel -> Administrative Tools -> 'Internet Information Services' -> Right Click on Default Website . Go To Home Directory in Local Path click on Browse and select the path 'c:\inetpub\wwwroot\SpearMail WebMail'. Click on OK.

12. Now you need to set default page as login.aspx. In same tab you will find tab called "Documents". Remove all the default file names and add login.asp and click on Add. Now click on ok.

13. If you SpearMail Installation partition is of NTFS Type then you need to give full permissions to IUSER. Pleas follow below procedure to give permission :

1. Open Windows Explorer -> Go to Tools -> Folder Options -> View -> Remove Tick Mark from **"Use Simple File Sharing"**
2. Then right click on MailData Folder which is there in c:\program files\SpearMail -> Click in Properties -> Security -> Click on Add -> Click on Advanced -> click on Find Now
3. There you will find username start from IUSER, select that user -> Click on OK
4. Click on OK -> Click on OK
5. Give Full Control to that user and click on OK
6. If just giving rights to IUSER does not give WebMail Access then give full rights to Administrator. Still it does not work then give full rights to Users.

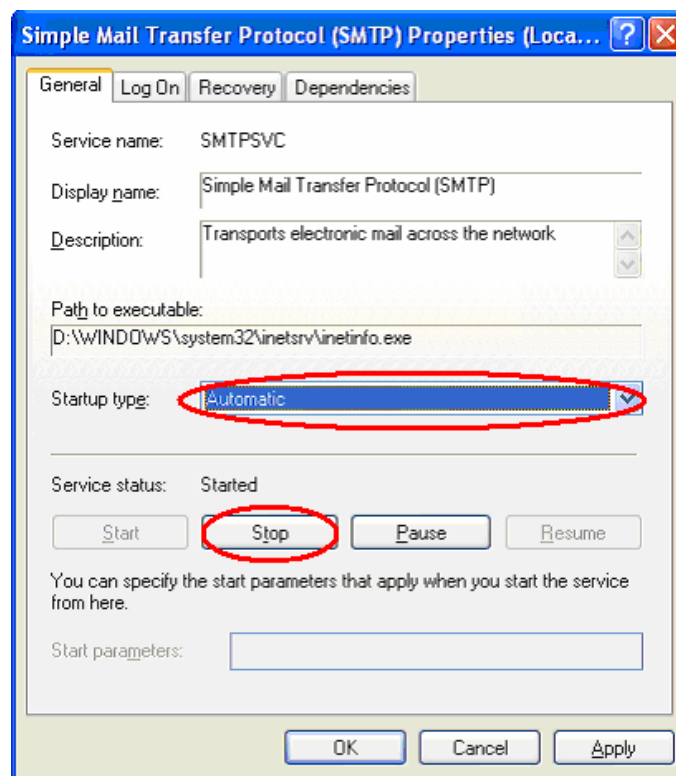
14. Once above steps gets completed you can view the web pages in the folder by typing 'http:// followed by your computer name' into the address bar of your web browser. Now you should see Login Page of SpearMail WebMail.

Installing IIS on Windows 2000 Professional

If you are running Windows 2000 Professional on your computer you can install Microsoft's web server, Internet Information Server (IIS) for free from the Windows 2000 Pro installation CD and configure it to run on your system by following the instructions below: -

1. Place the Windows 2000 Professional CD-Rom into your CD-Rom Drive.
2. Open 'Add/Remove Windows Components' found in 'Add/Remove Programs' in the 'Control Panel'.
3. Place a tick in the check box for 'Internet Information Services (IIS)' leaving all the default installation settings intact.
4. Now you need to stop SMTP Service of Windows as SpearMail will be using the same port 25. To Stop SMTP services of Windows Go To Control Panel -> Administrative Tools-> Services, search for "**Simple Mail Transfer Protocol (SMTP)**". Right click on Simple Mail Transfer Protocol (SMTP) go to properties click on Stop. Also change Startup Type from Automatic to Manual.

Pls. Look at the below screen for more reference



5. Once IIS is installed on your machine you can configure IIS through the 'Personal Web Manager' found in the 'Administration Tools' in the 'Control Panel'.
6. Double-click on the 'Personal Web Manager' icon.



7. Once the Personal Web Manager is open you will see the Main dialog box where it will show your home page and home directory default values. Where the home page is shown below as 'http://My_Computer', will be '<http://>' followed by the name of your computer. Clicking on each of these values will open your home page in your default web browser or open the default home directory in Windows Explorer.



8. Now from CD copy Folder Named "SpearMail WebMail" to '<c:\inetpub\wwwroot>' directory. Now you have to change default home directory from '<c:\inetpub\wwwroot>' to '<c:\inetpub\wwwroot\SpearMail WebMail>'. To change default directory Go to *Control Panel* -> *Administrative Tools* -> *Internet Information Services* -> Right Click on *Default Website* . Go To Home Directory in Local Path click on Browse and select the path '<c:\inetpub\wwwroot\SpearMail WebMail>'. Click on OK.

9. Now you need to set default page as login.aspx. In same tab you will find tab called "Documents". Remove all the default file names and add login.aspx and click on Add. Now click on ok.

10. For giving rights you need to follow from step no 10 of "Installing IIS on Windows XP"

11. Once above steps gets completed you can view the web pages in the folder by typing '<http://> followed by your computer name' into the address bar of your web browser. Now you should see Login Page of SpearMail WebMail.

Installing IIS on Windows 2003 Server

Windows 2003 server default installation installs IIS 6.0, you just need to follow from step no 10 of "Installing IIS on Windows XP"

In case if you are not able to see Login page the check for following :

Right Click on 'My Computer' -> Click on 'Manage' -> 'Services and Application' -> Internet Information Service (IIS) Manager -> Web Service Extension -> Allow following Web Services Extensions

1. Active Server Pages
2. ASP.NET v1.1.XXXX
3. ASP.NET v2.0.XXXXX
4. FrontPage Server Extensions
5. FrontPage Server Extensions 2002

Installing IIS on Windows Vista

Follow instruction manual of Windows Vista.